

Sterilisable Pressure Sensor for Encapsulation Unit J30

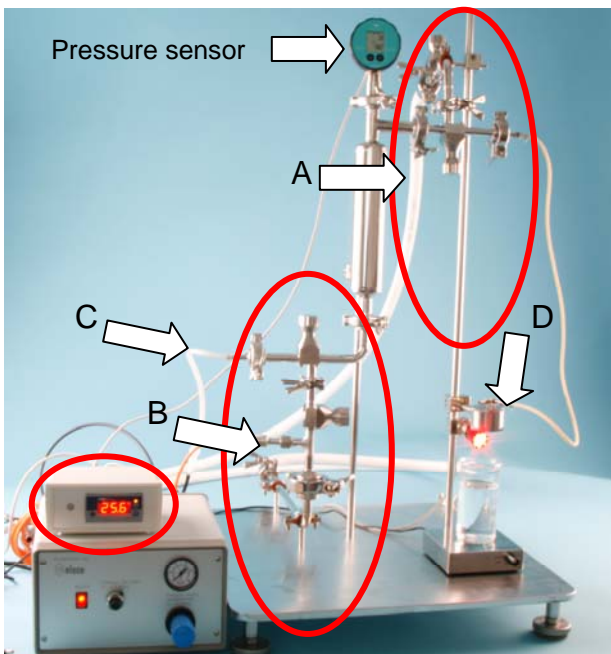


Nisco Engineering AG

Dufourstrasse 110
 CH-8008 Zurich, Switzerland
 Tel: +41 44 380 06 30
 Fax: +41 44 380 06 31
 e-mail: mailbox@nisco.ch
<http://www.nisco.ch>

The option "sterilisable pressure sensor" is used in combination with the aerodynamic encapsulation unit VAR J30 in order to avoid biological contamination with the air supply system.

In the picture below you can see that the sterilisable pressure sensor contains three main parts (circled), which are naturally integrated into the encapsulation unit J30. The temperature for sterilisation is displayed on the temperature indication unit (as an option available). The rigid platform at the bottom secures stability of the whole system.

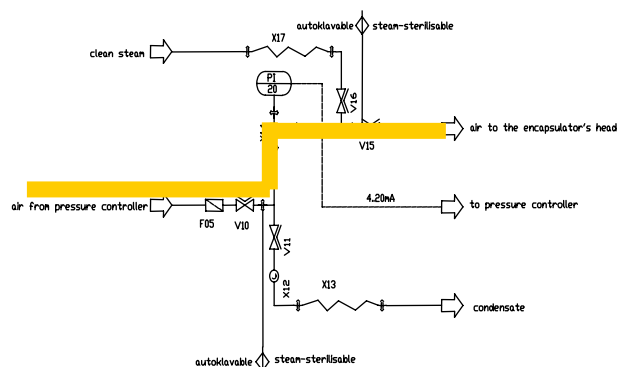


The clean steam comes through the hose A (steam inlet) into the system, sterilise its every part and the condensate is released through the hose B (condensate outlet).

Please make sure that the steam temperature never exceeds 135°. The EPDM gaskets and the membranes on your membrane valves melt at this temperature level. To operate the system you need the clean steam between 2.1barg to 3.1barg.

Air from J30 control cabinet enters the system through the hose C with the sterile filter and goes to the J30 head (D).

Air flow (normal operation)



The pressure drop through the sterile filter is compensated as we measure the pressure upstream the filter.

Materials

In contact with product Stainless steel AINSI 316L or equivalent
 Not in contact with product AISI 304 or equivalent
 Gaskets EPDM

Material certificates for all parts in contact with products can be supplied, which allows you to operate the unit under cGMP conditions.

Steam flow (sterilisation)

